

ORDINANCE NO. 2024-1021

AN ORDINANCE REZONING CERTAIN PROPERTY FROM B-3 TO R-2

BE IT ORDAINED, by the City Council of the City of Tusculmbia in the State of Alabama, as follows:

1. The following described property in the City of Tusculmbia, Alabama, shall be rezoned from B-3 to R-2 in the City of Tusculmbia, County of Colbert and State of Alabama, to wit:

Lots numbered one (1) through four (4), both inclusive, in block number forty (40); lots numbered one (1) through nine (9), both inclusive, the west one-half (1/2) of lot number twenty-three (23) and lots numbered twenty-four (24) through twenty-seven (27), both inclusive, in block number thirty-nine (39), that portion of vacated Hook Street lying between lot number four (4) in block number forty (40) and lot number one (1) in block number thirty-nine (329); the East ½ of that portion of vacated Hood Street adjacent to lot number twenty-seven (27) in block number thirty-nine (39); (being twenty-five (25) feet wide and 100 and thirty-four (134) feet long); said lots, blocks and vacated streets being situated in and known and designated according to the map of Mountain View Terrace Subdivision, which map is recorded in Map Book 3, Page 29, in the office of the Colbert County Judge of Probate

2. A survey of Lots 1-9, The West ½ of Lot 23 & Lots 24-27 in Block 69, and Lots 1-4 in Block 40, Tusculmbia, Alabama is attached hereto as Exhibit "A".

PASSED and ADOPTED this the _____ day of _____, 2024.

WILLIAM FOSTER
Mayor

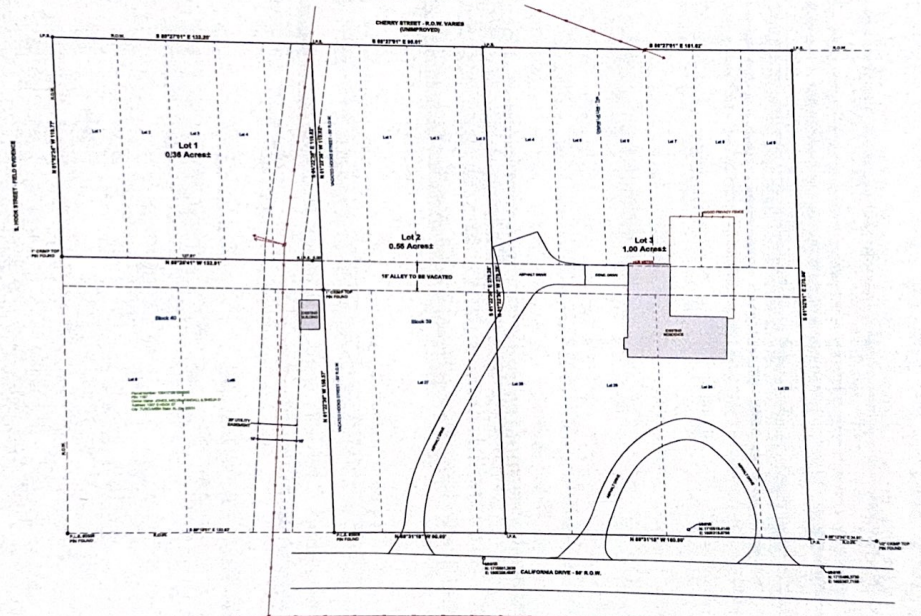
ATTESTED:

JOANN ARMSTEAD
City Clerk



**RE-SUBDIVISION OF LOTS 1 - 9, THE WEST 1/2 OF LOT 23 & LOTS 24 - 27 IN BLOCK 39,
LOTS 1 - 4 IN BLOCK 40, PART OF VACATED HOOK STREET AND PART OF VACATED 16' ALLEY, MOUNTAIN VIEW TERRACE**

FINAL PLAT
LOTS 1 - 9, THE WEST 1/2 OF LOT 23, LOTS 24 - 27 IN BLOCK 39, LOTS 1 - 4 IN BLOCK 40,
PART OF VACATED HOOK STREET AND PART OF VACATED 16' ALLEY, MOUNTAIN VIEW TERRACE
COLBERT COUNTY, ALABAMA



STATE OF ALABAMA
COUNTY OF COLBERT

I, **James L. Alexander**, a Licensed Land Surveyor in said State and County, hereby certify that I have surveyed the within tract of land designated as "Re-subdivision of Lots 1 - 9, the West 1/2 of Lot 23 & Lots 24 - 27 in Block 39, Lots 1 - 4 in Block 40, Part of Vacated Hook Street and Part of Vacated 16' Alley, Mountain View Terrace" on the annexed plat located in Lots 23 - 30, Block 11, Mountain View, Colbert County, Alabama. I have also surveyed the tract on the showing the areas and easements therein, giving the bearings, lengths, widths, corners of each area, as well as the area and number of each lot. Further, I certify that the annexed plat is a true and correct plat of said subdivision and shows the proper relationship to the U.S. Government Survey of Public Lands in the State of Alabama.

Given under my hand and seal this _____ day of _____, 2024.

James L. Alexander, P.L.S.
Alabama (License No. 2622)

STATE OF ALABAMA
COUNTY OF COLBERT

I, the undersigned, being duly sworn of the property defined on the annexed plat and designated as "Re-subdivision of Lots 1 - 9, the West 1/2 of Lot 23 & Lots 24 - 27 in Block 39, Lots 1 - 4 in Block 40, Part of Vacated Hook Street and Part of Vacated 16' Alley, Mountain View Terrace" do hereby certify that I have surveyed the within tract of land designated as "Re-subdivision of Lots 1 - 9, the West 1/2 of Lot 23 & Lots 24 - 27 in Block 39, Lots 1 - 4 in Block 40, Part of Vacated Hook Street and Part of Vacated 16' Alley, Mountain View Terrace" on the annexed plat located in Lots 23 - 30, Block 11, Mountain View, Colbert County, Alabama. I have also surveyed the tract on the showing the areas and easements therein, giving the bearings, lengths, widths, corners of each area, as well as the area and number of each lot. Further, I certify that the annexed plat is a true and correct plat of said subdivision and shows the proper relationship to the U.S. Government Survey of Public Lands in the State of Alabama.

Given under my hand and seal this _____ day of _____, 2024.

STATE OF ALABAMA
COUNTY OF COLBERT

I, the undersigned authority, in being Public and of said State and County, hereby certify that the annexed plat being a plat of the foregoing and same is known to me, the undersigned, and that the same is a true and correct plat of the property defined on the annexed plat and designated as "Re-subdivision of Lots 1 - 9, the West 1/2 of Lot 23 & Lots 24 - 27 in Block 39, Lots 1 - 4 in Block 40, Part of Vacated Hook Street and Part of Vacated 16' Alley, Mountain View Terrace" on the annexed plat located in Lots 23 - 30, Block 11, Mountain View, Colbert County, Alabama. I have also surveyed the tract on the showing the areas and easements therein, giving the bearings, lengths, widths, corners of each area, as well as the area and number of each lot. Further, I certify that the annexed plat is a true and correct plat of said subdivision and shows the proper relationship to the U.S. Government Survey of Public Lands in the State of Alabama.

Given under my hand and seal this _____ day of _____, 2024.

STATE OF ALABAMA
COUNTY OF COLBERT

I, **James L. Alexander**, a Licensed Land Surveyor in said State and County, hereby certify that I have surveyed the within tract of land designated as "Re-subdivision of Lots 1 - 9, the West 1/2 of Lot 23 & Lots 24 - 27 in Block 39, Lots 1 - 4 in Block 40, Part of Vacated Hook Street and Part of Vacated 16' Alley, Mountain View Terrace" on the annexed plat located in Lots 23 - 30, Block 11, Mountain View, Colbert County, Alabama. I have also surveyed the tract on the showing the areas and easements therein, giving the bearings, lengths, widths, corners of each area, as well as the area and number of each lot. Further, I certify that the annexed plat is a true and correct plat of said subdivision and shows the proper relationship to the U.S. Government Survey of Public Lands in the State of Alabama.

Given under my hand and seal this _____ day of _____, 2024.

STATE OF ALABAMA
COUNTY OF COLBERT

I, **James L. Alexander**, a Licensed Land Surveyor in said State and County, hereby certify that I have surveyed the within tract of land designated as "Re-subdivision of Lots 1 - 9, the West 1/2 of Lot 23 & Lots 24 - 27 in Block 39, Lots 1 - 4 in Block 40, Part of Vacated Hook Street and Part of Vacated 16' Alley, Mountain View Terrace" on the annexed plat located in Lots 23 - 30, Block 11, Mountain View, Colbert County, Alabama. I have also surveyed the tract on the showing the areas and easements therein, giving the bearings, lengths, widths, corners of each area, as well as the area and number of each lot. Further, I certify that the annexed plat is a true and correct plat of said subdivision and shows the proper relationship to the U.S. Government Survey of Public Lands in the State of Alabama.

Given under my hand and seal this _____ day of _____, 2024.

STATE OF ALABAMA
COUNTY OF COLBERT

I, **James L. Alexander**, a Licensed Land Surveyor in said State and County, hereby certify that I have surveyed the within tract of land designated as "Re-subdivision of Lots 1 - 9, the West 1/2 of Lot 23 & Lots 24 - 27 in Block 39, Lots 1 - 4 in Block 40, Part of Vacated Hook Street and Part of Vacated 16' Alley, Mountain View Terrace" on the annexed plat located in Lots 23 - 30, Block 11, Mountain View, Colbert County, Alabama. I have also surveyed the tract on the showing the areas and easements therein, giving the bearings, lengths, widths, corners of each area, as well as the area and number of each lot. Further, I certify that the annexed plat is a true and correct plat of said subdivision and shows the proper relationship to the U.S. Government Survey of Public Lands in the State of Alabama.

Given under my hand and seal this _____ day of _____, 2024.

STATE OF ALABAMA
COUNTY OF COLBERT

I, **James L. Alexander**, a Licensed Land Surveyor in said State and County, hereby certify that I have surveyed the within tract of land designated as "Re-subdivision of Lots 1 - 9, the West 1/2 of Lot 23 & Lots 24 - 27 in Block 39, Lots 1 - 4 in Block 40, Part of Vacated Hook Street and Part of Vacated 16' Alley, Mountain View Terrace" on the annexed plat located in Lots 23 - 30, Block 11, Mountain View, Colbert County, Alabama. I have also surveyed the tract on the showing the areas and easements therein, giving the bearings, lengths, widths, corners of each area, as well as the area and number of each lot. Further, I certify that the annexed plat is a true and correct plat of said subdivision and shows the proper relationship to the U.S. Government Survey of Public Lands in the State of Alabama.

Given under my hand and seal this _____ day of _____, 2024.

STATE OF ALABAMA
COUNTY OF COLBERT

I, **James L. Alexander**, a Licensed Land Surveyor in said State and County, hereby certify that I have surveyed the within tract of land designated as "Re-subdivision of Lots 1 - 9, the West 1/2 of Lot 23 & Lots 24 - 27 in Block 39, Lots 1 - 4 in Block 40, Part of Vacated Hook Street and Part of Vacated 16' Alley, Mountain View Terrace" on the annexed plat located in Lots 23 - 30, Block 11, Mountain View, Colbert County, Alabama. I have also surveyed the tract on the showing the areas and easements therein, giving the bearings, lengths, widths, corners of each area, as well as the area and number of each lot. Further, I certify that the annexed plat is a true and correct plat of said subdivision and shows the proper relationship to the U.S. Government Survey of Public Lands in the State of Alabama.

Given under my hand and seal this _____ day of _____, 2024.

STATE OF ALABAMA
COUNTY OF COLBERT

I, **James L. Alexander**, a Licensed Land Surveyor in said State and County, hereby certify that I have surveyed the within tract of land designated as "Re-subdivision of Lots 1 - 9, the West 1/2 of Lot 23 & Lots 24 - 27 in Block 39, Lots 1 - 4 in Block 40, Part of Vacated Hook Street and Part of Vacated 16' Alley, Mountain View Terrace" on the annexed plat located in Lots 23 - 30, Block 11, Mountain View, Colbert County, Alabama. I have also surveyed the tract on the showing the areas and easements therein, giving the bearings, lengths, widths, corners of each area, as well as the area and number of each lot. Further, I certify that the annexed plat is a true and correct plat of said subdivision and shows the proper relationship to the U.S. Government Survey of Public Lands in the State of Alabama.

Given under my hand and seal this _____ day of _____, 2024.

ALEXANDER

Surveyor's Office
1000 North 1st Street
Tomball, Texas 77375
Phone: 281-291-1111
Fax: 281-291-1112
www.alexandersurveyors.com

Legend:

- 1. Surveyed Boundary
- 2. Unsurveyed Boundary
- 3. Easement
- 4. Right of Way
- 5. Vacated Street
- 6. Vacated Alley
- 7. Proposed Street
- 8. Proposed Alley
- 9. Proposed Easement
- 10. Proposed Right of Way
- 11. Proposed Vacated Street
- 12. Proposed Vacated Alley
- 13. Proposed Easement
- 14. Proposed Right of Way

Notes:

1. See Note 1 of the Surveyor's Report for a complete description of the survey.
2. The survey was conducted in accordance with the Alabama Surveying and Mapping Act of 1991, as amended.
3. The survey was conducted in accordance with the Alabama Surveying and Mapping Act of 1991, as amended.
4. The survey was conducted in accordance with the Alabama Surveying and Mapping Act of 1991, as amended.
5. The survey was conducted in accordance with the Alabama Surveying and Mapping Act of 1991, as amended.
6. The survey was conducted in accordance with the Alabama Surveying and Mapping Act of 1991, as amended.
7. The survey was conducted in accordance with the Alabama Surveying and Mapping Act of 1991, as amended.
8. The survey was conducted in accordance with the Alabama Surveying and Mapping Act of 1991, as amended.
9. The survey was conducted in accordance with the Alabama Surveying and Mapping Act of 1991, as amended.
10. The survey was conducted in accordance with the Alabama Surveying and Mapping Act of 1991, as amended.
11. The survey was conducted in accordance with the Alabama Surveying and Mapping Act of 1991, as amended.
12. The survey was conducted in accordance with the Alabama Surveying and Mapping Act of 1991, as amended.
13. The survey was conducted in accordance with the Alabama Surveying and Mapping Act of 1991, as amended.
14. The survey was conducted in accordance with the Alabama Surveying and Mapping Act of 1991, as amended.

Scale: 1" = 40'

Sheet: 1 of 1